



Porter Medical Associates

Fundoscopy (Retinopathy Screening)

-A screening to identify any diseases of the retina that could result in impairment or loss of vision.

-Why is the retinopathy screening done?

This test involves the photographic examination of the different structures within the eye to document the condition of the eye, detect abnormalities, and to evaluate vascular and structural changes in the eye. Also helps in assessing the progression of diseases such as glaucoma, diabetic retinopathy and macular degeneration.

-Before your retinopathy screen.

If you wear contacts please wear glasses in place of them for the test or bring your personal solution and carrying case to remove and store them at the time of the visit.

-After your retinopathy screening.

You may return to your normal activities after the test.

-Does it hurt?

Because the retinopathy screening is not an invasive procedure, it is safe and quick for most patients.

-How is the retinopathy screening done?

You will sit straight forward while the tech is directly in front of you with the fundus camera. The tech will direct you in the positioning of your head as well as any other instructions needed.

-When will you get your test results?

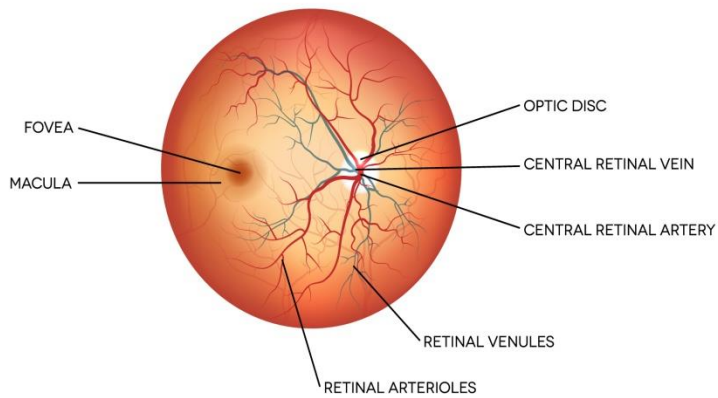
Your physician will discuss the test results with you at your next scheduled office visit. The information gained from the test helps your physician make an accurate diagnosis and develop a treatment plan that's best for you.



Porter Medical Associates

DIABETIC RETINOPATHY

NORMAL RETINA



DIABETIC RETINOPATHY

